



CARNAHAN · PROCTOR · CROSS, INC.

CONSULTING ENGINEERS · SURVEYORS · PLANNERS

6101 WEST ATLANTIC BOULEVARD, MARGATE, FLORIDA 33063
PHONE: 954-972-3959 FAX: 954-972-4178

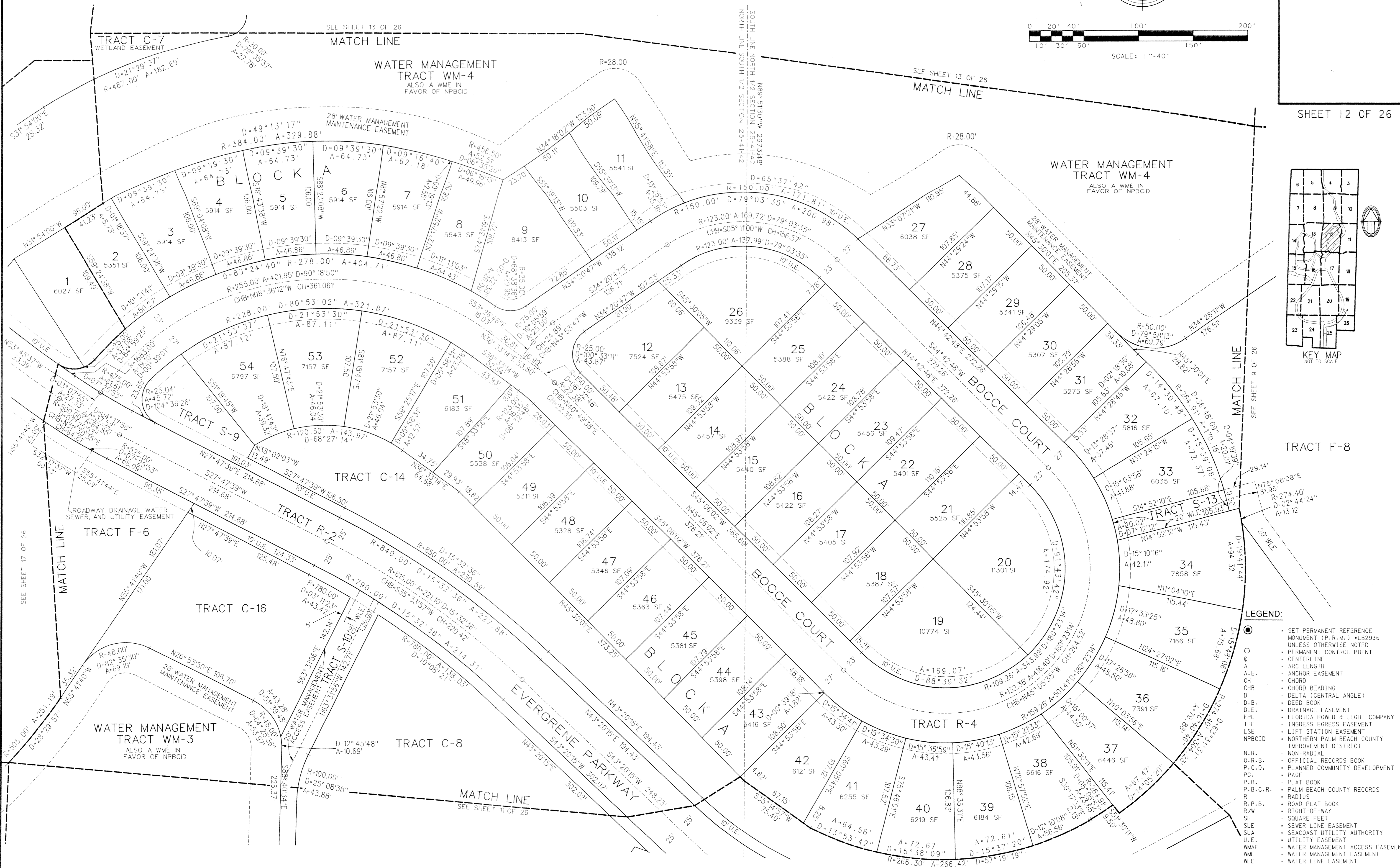
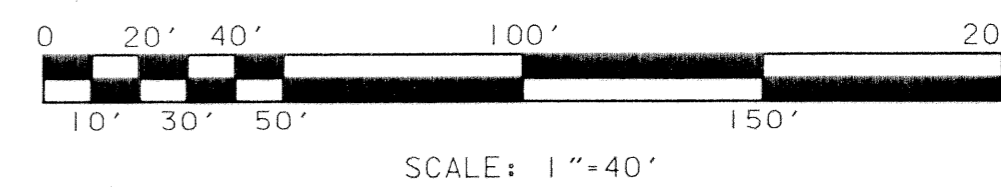
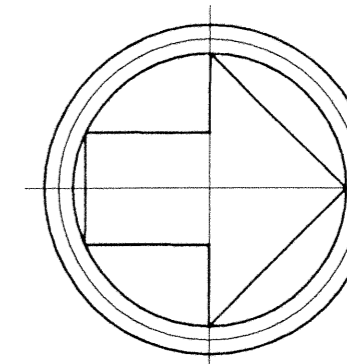
MAY 2002

990901B

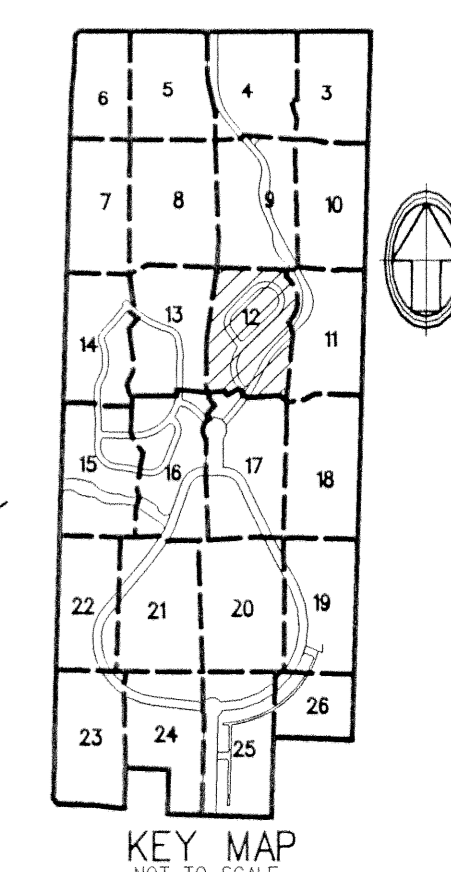
JSH

EVERGRENE PLAT TWO

A REPLAT OF A PORTION OF TRACT "A", "EVERGRENE" (P.B. 93, PGS. 117-119, P.B.C.R.)
CITY OF PALM BEACH GARDENS, PALM BEACH COUNTY, FLORIDA



SHEET 12 OF 26



TRACT F-8

- LEGEND:**
- SET PERMANENT REFERENCE MONUMENT (P.R.M.) *LB2936 UNLESS OTHERWISE NOTED
 - PERMANENT CONTROL POINT
 - CENTERLINE
 - ARC LENGTH
 - A.E. ANCHOR EASEMENT
 - CH CHORD
 - CHB CHORD BEARING
 - D DELTA (CENTRAL ANGLE)
 - D.B. DEED BOOK
 - D.E. DRAINAGE EASEMENT
 - FPL FLORIDA POWER & LIGHT COMPANY
 - IEE INGRESS EGRESS EASEMENT
 - LSE LIFT STATION EASEMENT
 - N.P.B.C. NORTH PALM BEACH COUNTY IMPROVEMENT DISTRICT
 - N.R. NON-RADIAL
 - O.R.B. OFFICIAL RECORDS BOOK
 - P.C.D. PLANNED COMMUNITY DEVELOPMENT
 - P.G. PAGE
 - P.B. PLAT BOOK
 - P.B.C.R. PALM BEACH COUNTY RECORDS
 - R. RADIUS
 - R.P.B. ROAD PLAT BOOK
 - R/W. RIGHT-OF-WAY
 - SF. SQUARE FEET
 - SLE SEWER LINE EASEMENT
 - SUA SEACOAST UTILITY AUTHORITY
 - U.E. UTILITY EASEMENT
 - WMAE WATER MANAGEMENT ACCESS EASEMENT
 - WME WATER MANAGEMENT EASEMENT
 - WLE WATER LINE EASEMENT

FILE: r:\990901\Needsp\1012p12.dgn
DATE: 16-May-02 16:16